



# NarDC

Nardatabank Biliřim ve Teknoloji A.ř.

Verilerinizi **Güvenle Depoluyoruz**

[www.nardc.com](http://www.nardc.com)

**Get to  
know us  
closely.**



**NarDC**  
Nardatabank Bilişim ve Teknoloji A.Ş.



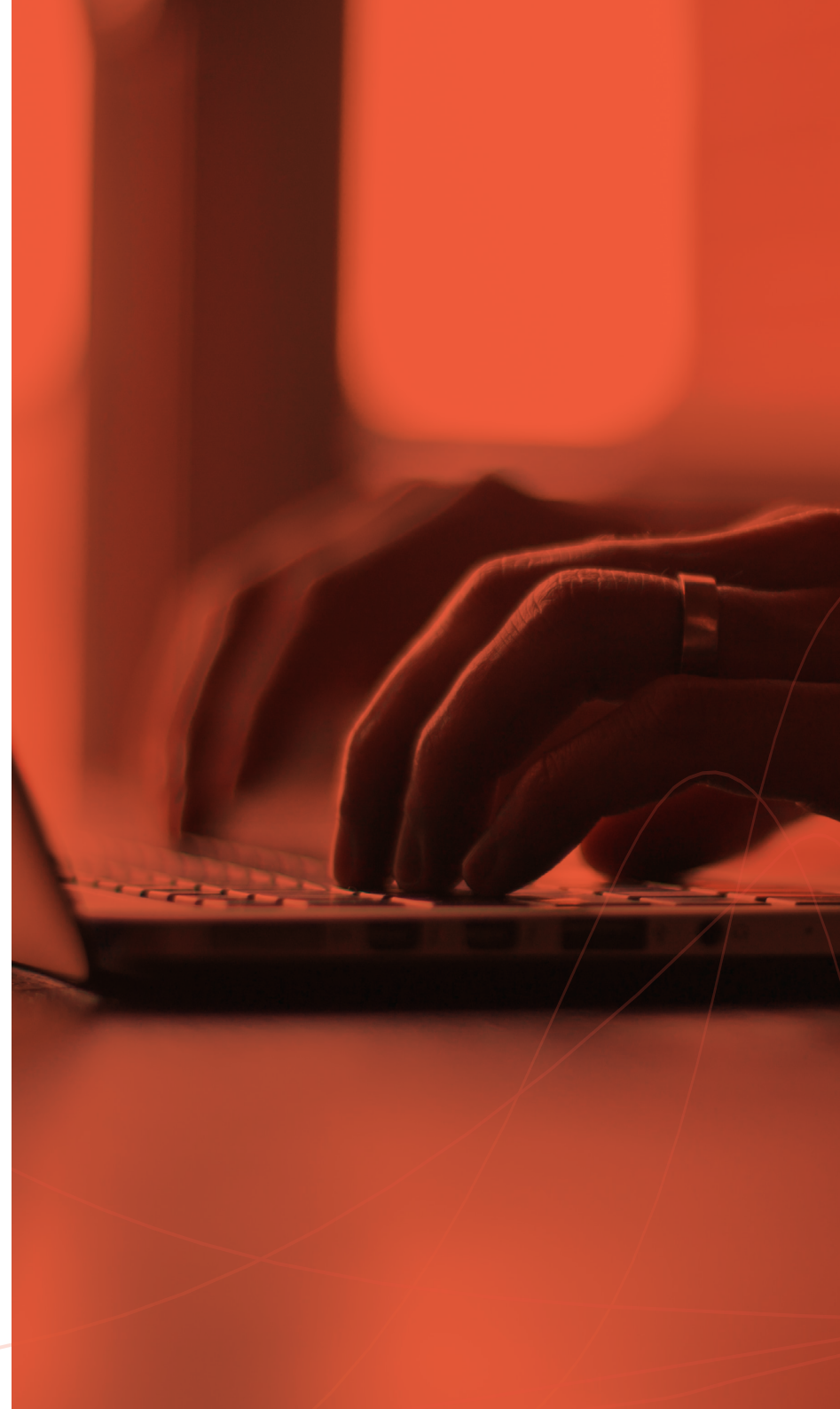
NarDC is the first brand of **NARDATABANK BİLİŞİM VE TEKNOLOJİ A.Ş.** which was established in 2020.

In the digitalizing world, we aim to make NarDC a world brand by competing with world brands with the quality services we will provide to our customers due to the globalization of trade. With the NarDC brand, **NARDATABANK A.Ş.** gets its power and capital from the 100% national and domestic **NAR BUSINESS COOPERATIVE.**



# **We Store Your Data Safely**

We provide services to public institutions and companies with the most affordable costs by evaluating the demands received by our teammates who have been specialized in the sector for many years and by producing solutions in the shortest time possible. We provide 24/7 based fast service with our teammates.





# OUR SERVICES



Data Center Solutions



IT Consultancy



Digital Security





Our Services

## Data Center Solutions

- ❖ Physical Server Rental
- ❖ Server Hosting
- ❖ Cloud Solutions
- ❖ Virtualization Solutions
- ❖ Cloud Backup Solutions
- ❖ System and Network Monitoring
- ❖ Disaster Recovery Solutions
- ❖ VPN Solutions

# Physical Server Rental



Intel® Xeon® E5-2650v2



32GB DDR3



2 x 500GB SSD



Limitsiz Trafik 100Mbit



2X Intel® Xeon® E5-2650V2



64GB DDR3



4 x 500GB SSD



Limitsiz Trafik 100Mbit



2X Intel® Xeon® E5-2690V2



128GB DDR3



2 x 1TB SSD



Limitsiz Trafik 100Mbit



2X Intel® Xeon® E5-2690V2



256GB DDR3



2 x 1TB SSD



Limitsiz Trafik 100Mbit



2X Intel® Xeon® E5-2697V2



256GB DDR3



2 x 1TB SSD



Limitsiz Trafik 100Mbit



2x Intel® Xeon® E5-2670V3



128GB DDR4



2 x 1TB SSD



Limitsiz Trafik 100Mbit

# Server Hosting

The features that make us unique are our transparent service principle, our prices / tariffs that do not discriminate between similar users, our cabinet and network automation system, we provide the necessary API support to integrate your business with us, and we offer remote hands (physical support) support free of charge.

We can list some of our cost advantage features as follows; The ability to receive service without traffic quota within the shared cabinets offered for those who will host a single server. Having their own network by purchasing only one internet access for businesses with high volume and private cabinets. Invoicing of energy measurements for each kWh with sensitive meters in smart cabinet systems. Cabinet rental tariffs with unrivaled internet access options.







# Cloud Solutions

## One to One Redundant Hardware

The hypervisor servers, storage equipment, intermediate switches used in the NarDC Cloud Server service are positioned as completely redundant. Your virtual server will not shut down in all physical operations to be performed on DELL EMC's specially designed servers, and in case of any failure, your virtual server will immediately restart on an available hypervisor server. With NarDC Cloud server service, you don't have to worry about hardware failures.

## Cloud Server Security

With the vlan reserved for each of our customers, your virtual server works in isolation from other users. You can keep your own virtual servers in the same vlan network, and you can access between your servers at high speed over the local network with a 40Gbps / sec port. All of the network equipment used is fed back-up with 2x40Gbps / sec uplink, so the quality of your internet access is not interrupted in any case.

# Virtualization Solutions

Virtualization technology reduces your organization's costs, increases access to applications and simplifies IT management. With the NarDC Virtualization service, you can easily get rid of your heavy loads ...

**Server Virtualization**

**Network Virtualization**

**Desktop Virtualization**

**Software Virtualization**

**Storage Virtualization**

Virtualization reduces downtime and minimizes lost revenue.

Server consolidation helps you reduce investment and operating expenses.

The server consolidation path improves energy efficiency and requires less hardware, reducing your investment and operating costs.

Provides simplified disaster recovery solutions, ensuring business continuity for your infrastructure.

It maximizes service levels and performance by virtualizing critical

corporate applications including databases (Oracle Database,

Microsoft SQL Server, SAP HANA, SAP Sybase) and business

applications (SAP Business Suite, Microsoft Exchange, SQL Server,

SharePoint, SAP). Finding the appropriate software for the transition

to virtualization technology; You may encounter difficulties such as choosing the right server, data storage and network infrastructure.

Taking advantage of NarDC's unique field experience, you can create a standards-based virtualization strategy with our VMware and Hyper-V solutions and implement it in a short time. .

```
{
  "timestamp": "2017-06-03T18:00:00",
  "class": "com.orgmanager.handler",
  "sizeChars": "5022",
  "message": "message",
  "webURL": "/app/page/analyze",
  "requestID": "8249868e-afd8-46a8-b8d1-1a1a",
  "durationMillis": "36"
}{
  "timestamp": "2017-06-03T18:00:00",
  "class": "com.orgmanager.handler",
  "sizeChars": "10190",
  "message": "message",
  "webURL": "/app/rest/json/file",
  "requestID": "7ac6ce95-19e2-4a1a-b8d1-1a1a",
  "durationMillis": "23"
}{
  "timestamp": "2017-06-03T18:00:00",
  "class": "com.orgmanager.handler",
  "sizeChars": "5022",
  "message": "message",
  "webURL": "/app/page/analyze",
  "requestID": "8249868e-afd8-46a8-b8d1-1a1a",
  "durationMillis": "36"
}{
  "timestamp": "2017-06-03T18:00:00",
  "class": "com.orgmanager.handler",
  "sizeChars": "10190",
  "message": "message",
  "webURL": "/app/rest/json/file",
  "requestID": "7ac6ce95-19e2-4a1a-b8d1-1a1a",
  "durationMillis": "23"
}
```

# Cloud Backup

Cloud Backup, Server Backup system offered by NarDC in the cloud environment, is a disk-based backup and recovery system. Cloud Backup ensures that the files in your cloud server are backed up.

Data backed up by Cloud Backup is encrypted daily and stored on NarDC servers. Restoration of your backed-up instance is fully ensured. In the cloud backup service, backups of your servers are taken at periods you prefer (Daily, Weekly, Monthly). During the restore, data, application etc. transfer is 100% secure, and there is no data loss in any way.





# System and Network Monitoring

In today's world, the term network monitoring is widely used in the IT industry. In the network monitoring process, all network devices such as routers, switches, firewalls, servers and VMs are monitored for errors and performance. It is a critical IT process in which these components are continually evaluated to maintain and optimize their availability.

Statistics are collected from specified hosts such as Router, Server, switch and other important network devices or applications with network monitoring software; Important data such as network traffic details, CPU values, disk usage, Up-Down status can be checked.

An important aspect of network monitoring is that it must be proactive. Finding performance issues and bottlenecks proactively helps identify issues in the first place. Effective proactive monitoring can prevent network outages or failures.





# Disaster Recovery

Disaster Recovery (DR) is the data backup we make in another location and the data center we secure through this system as a backup in case of natural disasters and data loss that may occur. These centers are called Disaster Recovery centers. The main purpose is not to back up data, it takes precautions against disaster situations by storing the data in another location as a geographical location.

At this point, one of the most important features is that the Disaster Recovery Center must be exactly the same as the main data centers, especially in data storage units, so that it can continue to provide the same service in case of a disaster.



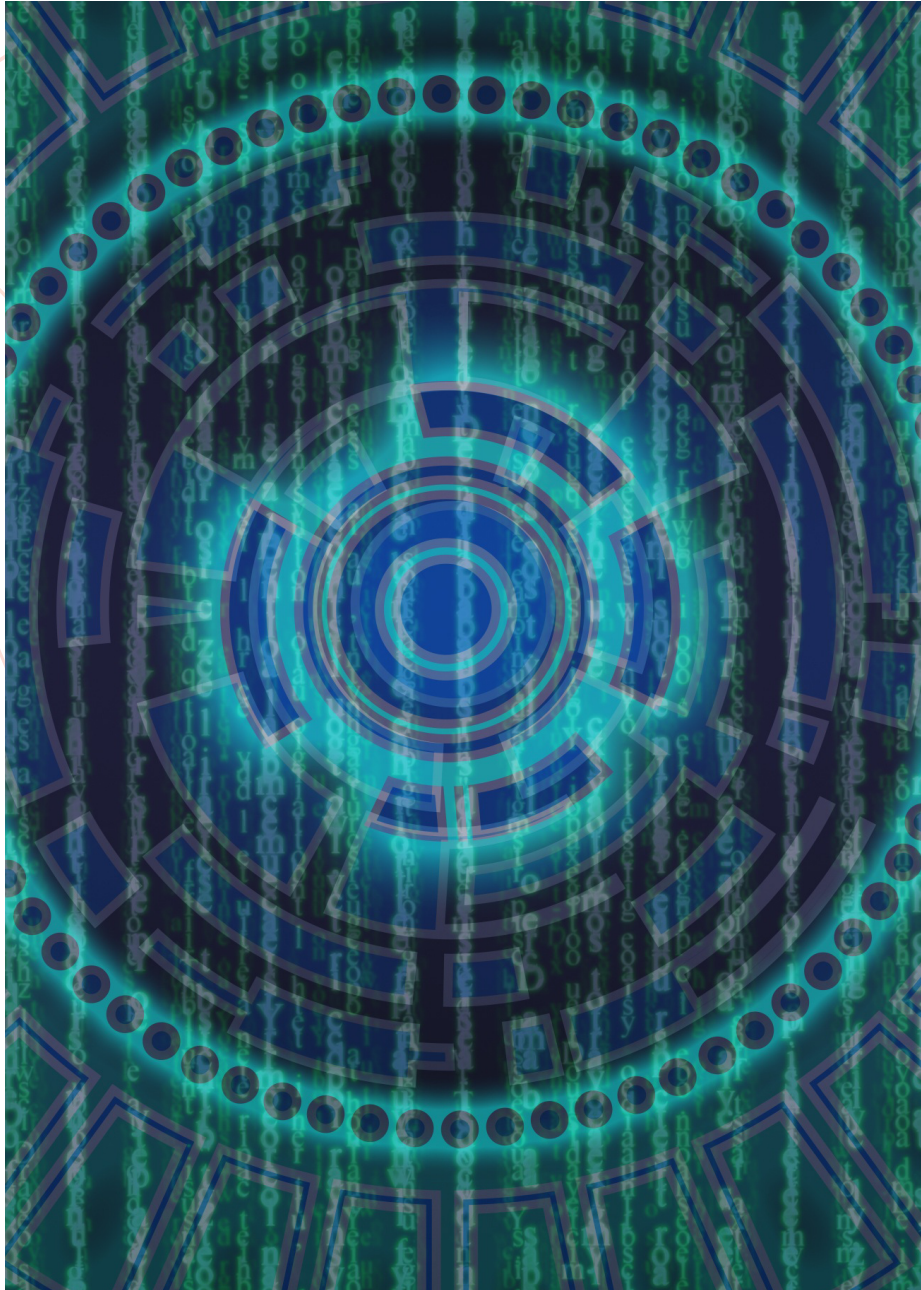
# VPN Solutions

It is of paramount importance that mobile employees can quickly access the company network and information from anywhere, anytime. However, it is extremely important for both the company and the employees that this connection is secure. NarDC, which comes into play at this point, offers businesses a secure and easy-to-install VPN service. In addition to data communication between endpoints, internet access services are also offered in VPN services.

## Major Services:

- Only granting internet access to the center,
- Allowing internet access only to the needed endpoints,
- Internet access of all endpoints,
- Logging of internet access





## IT Consulting

- 🔥 Infrastructure Setup
- 🔥 The firewall
- 🔥 Backup & Backup
- 🔥 Maintenance & Support
- 🔥 SMS Service
- 🔥 Corporate Mail (GDPR)





## Infrastructure Setup

Information technologies and systems have become a mandatory part of almost every institution's business processes. Due to the rapid change and development of technology, it has become almost impossible to specialize in every subject in IT / IS systems.

Today, rapidly developing information communication technologies bring the need for a low-cost, fast, high-quality network infrastructure. NarDC can provide turnkey projects and consultancy services in the sense of establishing and managing the network infrastructure system, seamlessly integrating active and passive network equipment with each other, restructuring your existing network infrastructure with the latest technological solutions, by offering customer-oriented solutions that are suitable for your needs with its trained, experienced expert staff.

# Firewall

## **“We Store Your Data Safely”**

Layer 7 Filtering and Reverse Proxy Service

Layer 4 Stateless Firewall

DDoS Attack Filtering

UDP Attack Filtering

SYN Spoofing Attack Filtering

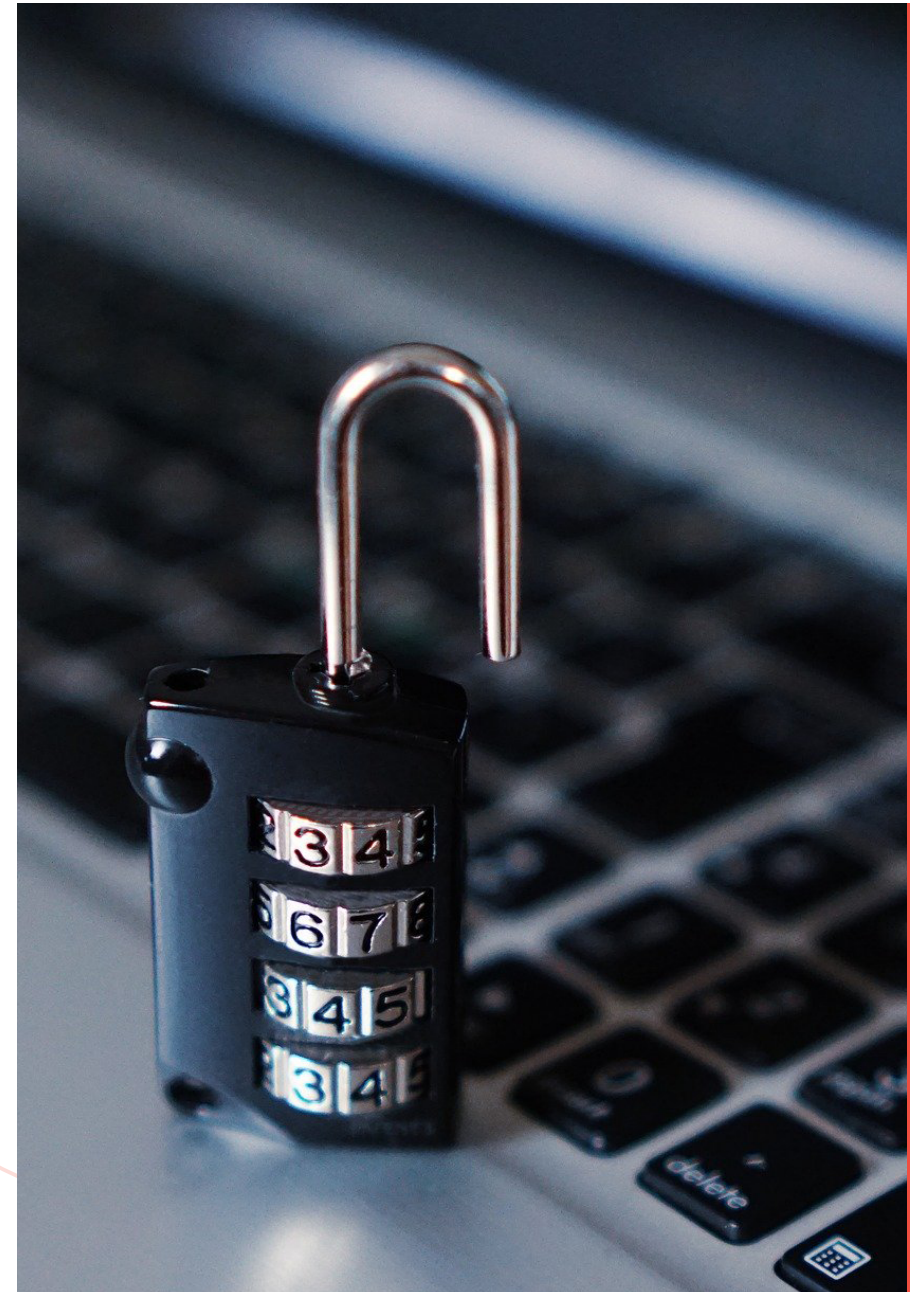
IPS Firewall Service

Attack Detection and Logging

SSL VPN Solution

## **Corporate Firewall Services**

NarDC offers you IT security within the scope of corporate services. Firewall Service includes defining the rules requested by the customer on the firewall devices and the management of the firewall devices in order to prevent unauthorized access to the customer's local network or from the local network to the Internet.





# Backup

Tailor-Made Backup Policy and Planning

Backup via FTP

Backup on SAN / NAS architectures

Central backup over local and wide network

Periodic Operating System Image

Server independent backup (Server-Free Backup)

## **Secure and High Capacity Backup Solutions**

Backup is one of the IT requirements that today's businesses often ignore but are invaluable at the time of trouble. Today, while many business needs are met on IT systems, it is an inevitable need for these systems to be prepared for possible problems. At this point, NarDC offers you safe and high-capacity backup solutions. Whether you are housed in the NarDC Data Center or in the system room of your own location, you can back up your IT infrastructure with us.





## Maintenance & Support

Today's corporate IT infrastructures are geographically dispersed and include a large number of telecommunications, hardware and software solutions. IT infrastructures need professional maintenance and technical support in accordance with SLA standards in order to ensure continuous end-user productivity.

NarDC Service Center provides multi-purpose IT infrastructure planning, implementation, management, maintenance and technical support services for a wide range of software, hardware and telecommunication solutions. NarDC has an experienced team of authorized technical experts and offers flexible service plans in order to meet the high SLA requirements of its customers.

# SMS Service

SMS is still the most memorable and personalized way of communication today. Consider this: on average, each message takes 6 seconds to deliver, and 90% of recipients read it within 5 minutes.

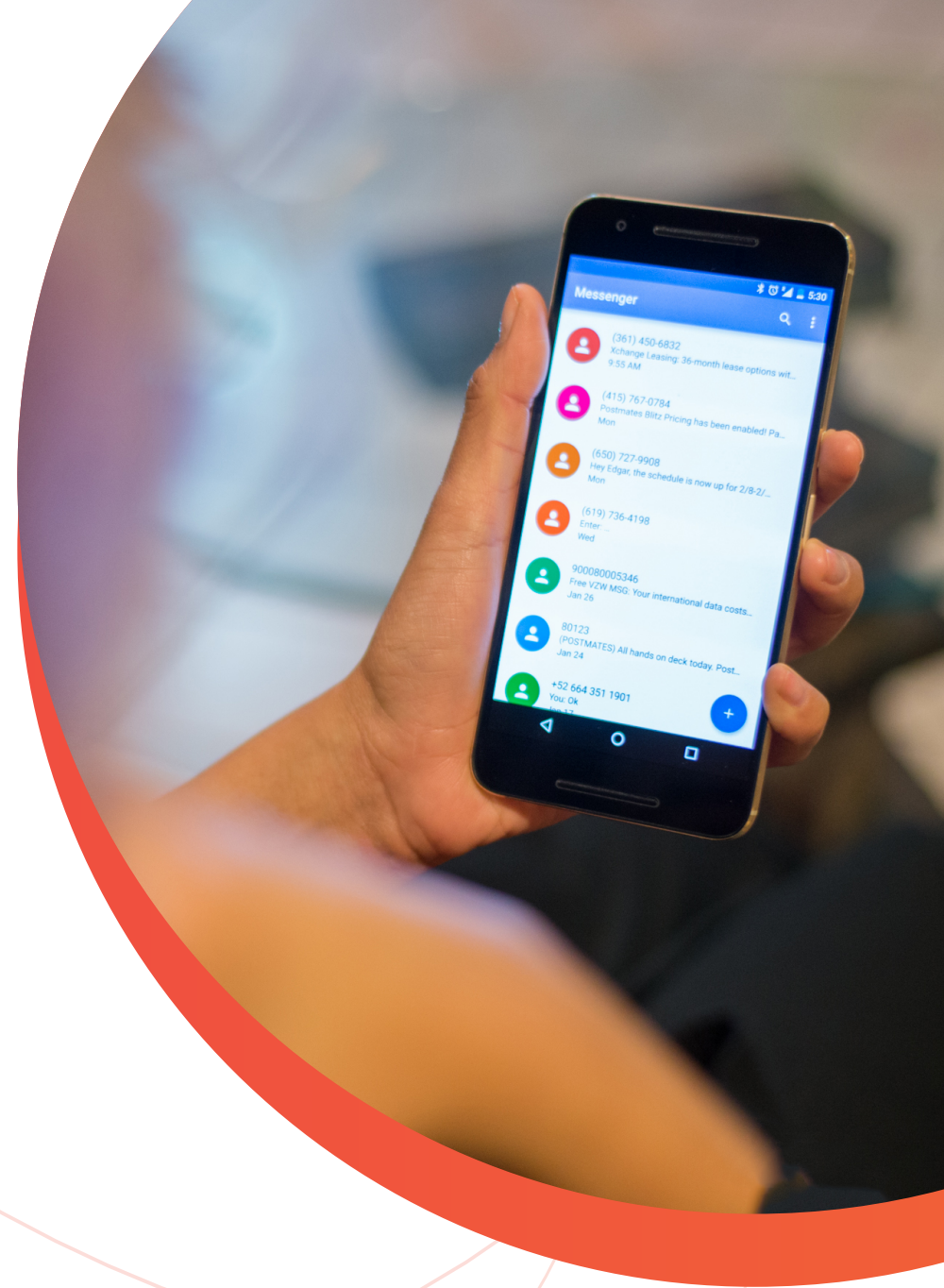
Today, 5 billion mobile phones are used in the world, which is 5 times the number of users of the largest social networking site, and the idea of reaching existing and new customers via mobile phones is increasing day by day.

Transmission of large amounts of messages without waiting in line

Direct links to mobile operators Real-time transmission reports

Powerful SMS messaging and account management web portal

NarDC Sms Service Privileges with enterprise level API support.





1

## Corporate Mail (GDPR)

Corporate e-mail service is a professional cloud service that offers the most suitable tools for your business. Email, calendar and contacts are presented together, synchronized across all your devices. It is also compatible with KVKK through servers located in Turkey.

Check your e-mails not only when you have the opportunity, but whenever you want. With special programs for Windows, Mac and Linux and special applications developed for your iOS or Android mobile devices, you can access your e-mails anytime, anywhere.

With SpamExperts Professional SPAM filter, you do not deal with SPAM mails in our corporate e-mail service. All e-mails that come to you pass through the SPAM filter and are scanned for viruses.



# Digital Security Consultancy

- ❖ Penetration Tests
- ❖ Cyber Incident Response
- ❖ Social Engineering
- ❖ Cyber Hygiene and APT Detection
- ❖ Red Teaming and Methodology
- ❖ Endpoint Security Monitoring
- ❖ Level Detection and Improvement
- ❖ SIEM / LOG Correlation
- ❖ Cyber Crime Review
- ❖ Regular Vulnerability Scan
- ❖ DoS, DDoS Testing and Protection





# Penetration Test

Penetration test - Pentest should be done in order to keep the security skills of the company at a high level, to see and take precautions from outside attacks, to keep the investment made in your systems safe, and most importantly, to prevent information loss that may occur due to security vulnerabilities.

## Types of Penetration Test

1-) BlackBox Penetration Test; Black box penetration test is a type of attack performed without any knowledge of the network to be attacked.

2-) WhiteBox Penetration Test; White box penetration test is a type of penetration test performed with knowledge of all systems on the network.

3-) GreyBox Penetration Test; Gray box penetration test enables analysis of the damage that an unauthorized user in the internal network can cause to the systems. Network weaknesses are checked for data stealing, privilege enhancement and network packet recorders.



# Cyber Incident Response

Considering the importance of cyber security as a result of studies involving technical and legal sanctions in order to ensure the structuring of cyber security in our country, the "Decision on the Execution and Coordination of National Cyber Security Studies" was published in the Official Gazette on October 20, 2012. With this decision, the "Cyber Security Council" was established in order to approve the procedures, principles and standards in the field of cyber security, and to ensure their implementation and coordination. As a result of the meeting held by the Cyber Security Council, the action plan published by the Ministry of Transport, Maritime Affairs and Communications was accepted.

Unless additional actions are taken by evaluating violations in information systems from a professional perspective, the risk of encountering similar incidents again and again increases exponentially. Every event should be examined in detail as an experience and necessary precautions should be taken in order not to happen again.



# Social Engineering

Social engineering is defined as the whole process of trying to obtain the desired information with various persuasion and deception methods by taking advantage of the weaknesses of people. Just as there are techniques to change people's decision-making processes in Social Engineering attacks, human behaviors are considered as openings and attacks can be made using these openings.

This type of attack that is so common and has a high success rate is not yet considered a serious attack by the majority of information security experts. The main reason for this is that social engineering attacks can be carried out so easily that they do not require any technical knowledge. However, attacks that are not always difficult in security, but simple and targeting the end user do harm.



# Cyber Hygiene and APT Detection

This service is determined by making use of the botnets of the systems within the organization, zombified systems, tools used for data leakage, systems where remote unauthorized access programs are installed, back doors, trojan infected systems, and data from the cyber threat intelligence network, and reported.

For the detection of Cyber Hygiene Status and APT, a total of 30,000 anomaly rules and special systems with 200,000,000 categorized domains in the database are used. The traffic obtained depending on the requested service level is controlled in six different APT and Antimalware systems and the error rate (false positive - false negative) is reduced to a minimum.







## Red Teaming Service and Methodology

Red Teaming is a full-scale and multi-layered attack simulation designed to measure the level of an organization's security devices, networks, employees, applications and physical security controls to withstand a real-life attack. It provides a specific way for companies' security teams to test how well the organization will do in the face of a real attack. A well-built Red Teaming will reveal the following related security vulnerabilities and risks related to technology infrastructure, manpower and physical security.

During Red Teaming operations, highly trained security consultants put into effect attack scenarios to reveal potential physical, hardware, software and human vulnerabilities. In this way, Red Teaming also reveals opportunities for malicious people to compromise company systems and networks or to allow data breaches.

# EndPoint Security Monitoring

Endpoint Detection and Response (EDR) security is an evolving technology. The term defines a category of tools and solutions focused on detecting, investigating and mitigating suspicious activity and problems on servers and endpoints.

Endpoint security monitoring solutions support traditional signature-based technologies for richer behavior-based anomaly detection and visibility at endpoints. It is now understood by all companies that layered network and security structures do not adequately protect organizations. Advanced persistent threats (APT) and specialized targeted malware attack tools can bypass traditional signature-based antivirus solutions.







## Level Detection and Improvement Service

With NarDC "Cyber Security Detection Study", the security levels of the institutions and the contribution of the security investments they make to the institutional security are revealed. Organizations can determine whether their data is safe by checking the security technologies they use.

With the technical analyzes carried out within the scope of the "Cyber Security Detection Study", the cyber security maturity level of the information systems of the institution is revealed with concrete parameters and measures are presented against information technology risks that may affect the system in terms of security.



# SIEM / LOG Correlation Service

SIEM means Log monitoring. The log management and analysis covering all critical networks and devices in your system is called SIEM project. It is defined as the analysis of the event records produced by the system according to the determined rules. With SIEM Projects, log management, which consists of steps such as collecting, combining, storing the logs produced by the system, and performing accurate analyzes, can reveal the indicators and evidences of the attack. Another name for these projects is Log Management.

It should not be forgotten that SIEM systems are not log generators, but components that collect, make sense and generate alarms. Most organizations think they will only be aware of local network anomalies by installing SIEM, whereas SIEM is like a calculator, if you don't tell it the correct number and action, the result will not turn out as you expect.



A person is shown from the chest up, wearing a VR headset. The background is a dark, digital space filled with glowing blue and white text, resembling computer code or data. A large, curved red shape is on the right side of the image, partially obscuring the person and the background.

# Cyber Crime Investigation Service

Information systems, as in all areas of life, confront us with crime and criminal cases. Information systems, which are positioned as a key component in the enlightenment of events in the age of technology, when analyzed accurately and impartially, can present evidence of the criminal that cannot be detected by normal means.

When combined with criminal psychology and the power of technology, Computer Forensics reveals undeniable concrete evidence.

The collection of evidence by a professional team after a crime committed or a cyber security violation in the cybercrime investigation service reveals important information and evidence about the criminal. In addition, "what else did the person or persons who infiltrated the system do?" We can find the most comprehensive answer to the question as a result of these studies.

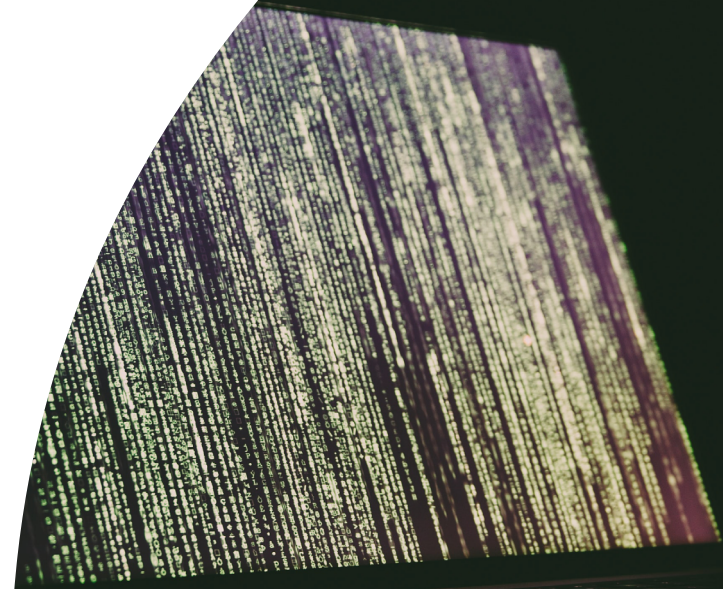


# Regular Vulnerability Scanning and Management Service

Penetration testing, which is one of the basic components of proactive security, is carried out once a year (usually) due to the cost factor, depending on the preference of the institutions. However, in the IT systems used by medium and large-scale companies, on average, critical security vulnerabilities emerge every week.

Regular Vulnerability Scanning and Management Tool has been developed in order for companies to automatically conduct security scans over the internet in time periods when they do not have penetration tests.

In the regular use of vulnerability scanning and management tools, first of all, the assets of the institution are defined in the system. Security scan requests are then sent at regular intervals. Security scan requests come to the Management Tool administrators, security scans are performed according to the demand and the type of asset (such as Network, System, Application).







## **DoS, DDoS Tests and Protection Service**

DDoS is a type of denial-of-service attack aimed at the accessibility part of the security triangle, aiming to prevent the target from serving and executing from distributed sources.

The hardest part of preventing DDoS attacks is the separation of real user traffic and attack traffic under heavy demand.

Non-vulnerability-based attacks such as DDoS cannot be prevented with signature-based IPS systems. Many existing IPS and Firewall solutions offer two options against DDoS attacks; block all packets above the specified limit when heavy traffic arrives or disable packet inspection. Over-limit packet blocking enables attackers to achieve their goal by blocking random packets, preventing real users from accessing services. Disabling the analysis by the security system allows the attacker to exploit vulnerabilities in the network.



# NarDC

Nardatabank Biliřim ve Teknoloji A.ř.

📍 Hüseynağa Mahallesi İstiklal Caddesi No : 56-58 Grandpera Beyoğlu / İSTANBUL

📍 Mücahitler Mah. 52043 Nolu Cad. Mehmet Karagülle İş Merkezi No:1 Kat:8 İç Kapı No:80

**řehitkamil / GAZİANTEP**

☎ 0850 304 6 305 ✉ info@nardc.com 🌐 www.nardc.com

🌐 📷 🐦 🌐 nardatacenter